

# EFX - ME

Audio Controller

***EFX-ME WINDOWS EDITOR  
OWNER'S MANUAL***

## Download and Unpack the EFX-ME Editor

---

- Download and unpack the Zip file.  
<http://www.musicomlab.com/efx-me.htm>

### **Note**

- The EFX-ME Editor is a standalone software. No installation is not required.
- To use the EFX-ME Editor, the EFX-ME firmware must be **V1.00 or higher**.  
If the EFX-ME firmware is lower than V1.00, you need to update to the latest firmware.  
Refer to the '**Firmware Update**' on the Page 5.

## Connect MIDI Interface

---

- Connect your computer and MIDI interface.
- Connect the MIDI interface's MIDI IN to the EFX-ME's MIDI OUT/THRU and the MIDI interface's MIDI OUT to the EFX-ME's MIDI IN.

### **Note**

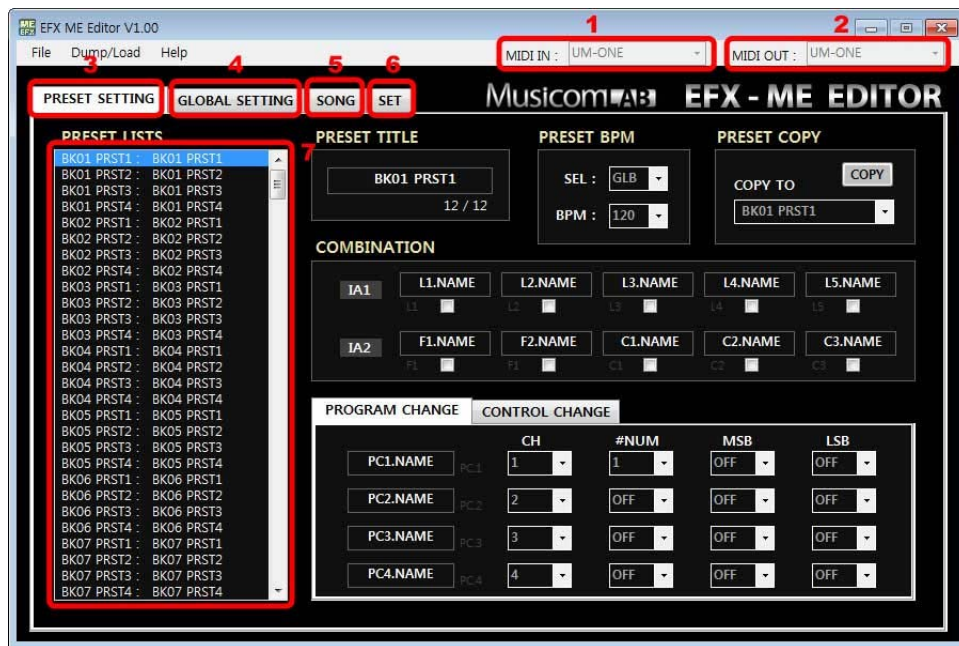
- Make sure to install the latest drivers for your MIDI interface before attempting to start the EFX-ME Editor.
- Our recommended MIDI interfaces are the **Roland UM-ONE** and **M-Audio USB UNO 1x1**.  
These MIDI interfaces are inexpensive and have been tested to be compatible with the EFX-ME.

## Start the EFX-ME Editor

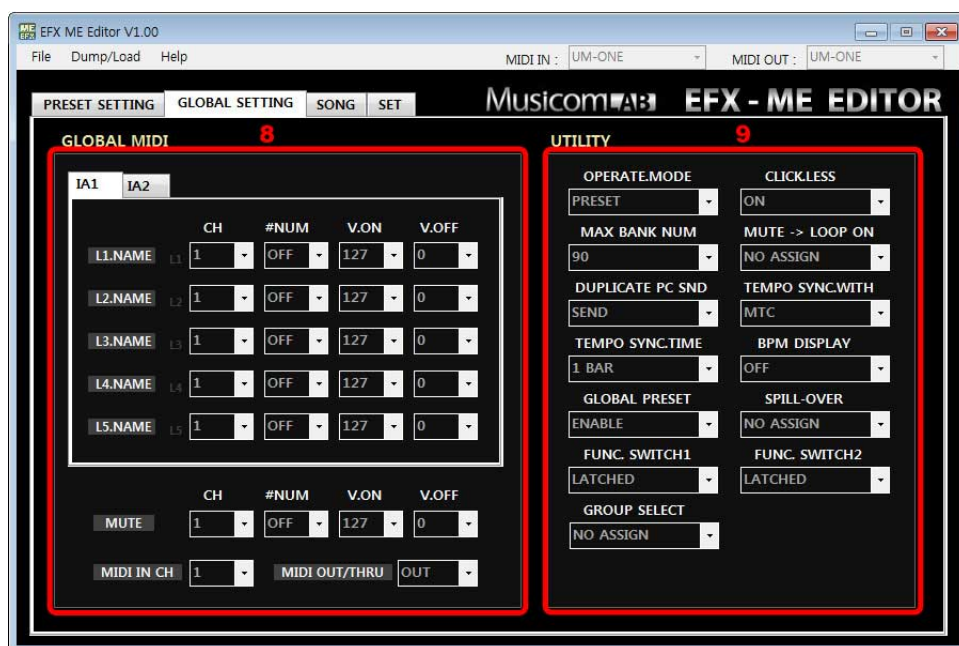
---

- Double-click **EFX-ME\_Editor\_V1xx.exe** file to start the editor.
- Plug in power to the EFX-ME.
- The EFX-ME must be on the **MIDI SYSEX DATA DUMP/LOAD** menu in the SETUP mode in order to work with the Editor.  
Follow the procedure below.
  1. To enter the SETUP Mode, press and hold the **MODE/BANK▼** and **BANK▲** switches for 2 seconds.
  2. To enter the UTILITY Menu, press the **4/TAP (UTILITY)** switch.
  3. To move the MIDI SYSEX DATA DUMP/LOAD menu, Press the **3** or **4** switch until '**MIDI SYSEX DATA =DUMP/LOAD**' is shown on the LCD display.

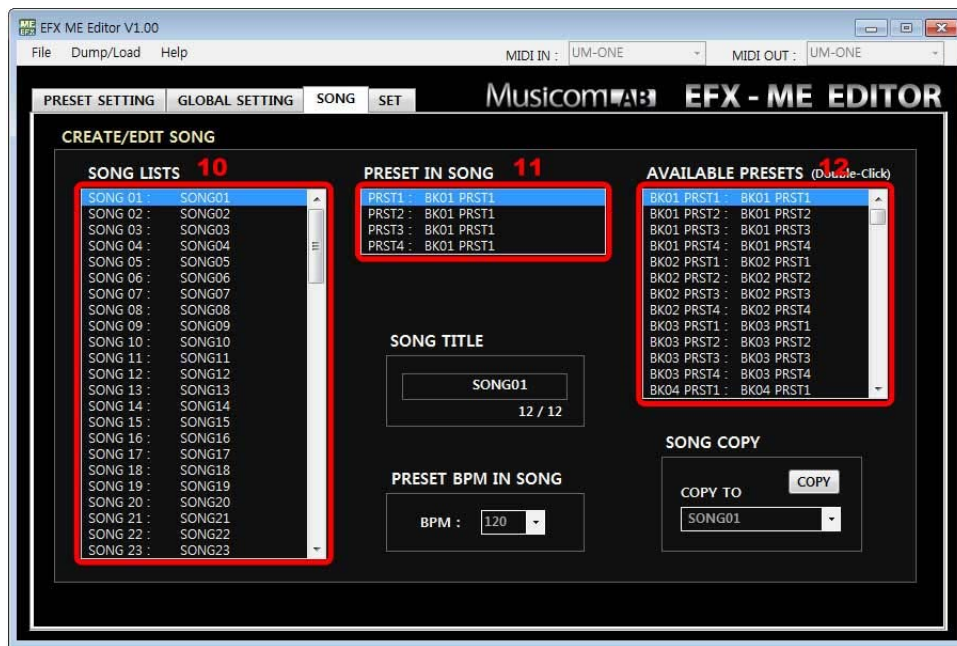
## Screen Description



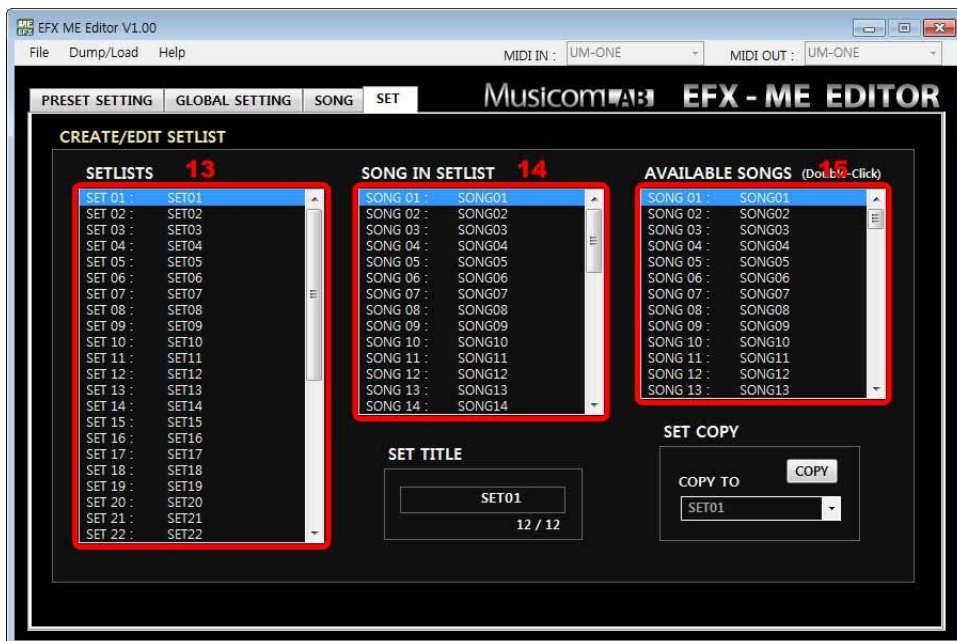
1. **MIDI IN DEVICE SELECTOR** – Select the your MIDI interface's MIDI IN
2. **MIDI OUT DEVICE SELECTOR** – Select the your MIDI interface's MIDI OUT
3. **PRESET SETTING MENU**
4. **GLOBAL SETTING MENU**
5. **SONG MENU**
6. **SET MENU**
7. **PRESET LISTS** – Select a preset that you want to edit.



8. **GLOBAL MIDI MENU**
9. **UTILITY MENU**



10. **SONG LISTS** – Select a song that you want to edit.
11. **PRESET IN SONG** – Select a preset in the song that you want to edit.
12. **AVAILABLE PRESETS** – Select a original preset to be used in the song by double-click.



13. **SETLISTS** – Select a setlist that you want to edit.
14. **SONG IN SET** – Select a song in the setlist that you want to edit.
15. **AVAILABLE SONGS** – Select a original song to be used in the setlist by double-click.

## Load Data from EFX-ME

---

- Choose **Dump/Load** -> **Load (From EFX-ME)**
- The EFX-ME must be on the **MIDI SYSEX DATA DUMP/LOAD** menu in the SETUP mode

## Dump Data to EFX-ME

---

- Choose **Dump/Load** -> **Dump (To EFX-ME)**
- The EFX-ME must be on the **MIDI SYSEX DATA DUMP/LOAD** menu in the SETUP mode

## Firmware Update

---

- Download and Unpack the new firmware Zip file.  
<http://www.musicomlab.com/efx-me.htm>
- Plug in power while holding the **MODE/BANK▼** and **BANK▲** switches down. The LCD display will show '**Firmware Update!**'
- Choose **File** -> **Firmware Update** to open the new firmware file (EFX\_ME\_vxxx\_app.syx).
- Click '**UPDATE**' button.
- All LEDs above the switches blink while the new firmware is loading.  
This updating process requires about **four minutes**.
- The EFX-ME automatically restarts when the update is complete.