

EFX - LE

Audio Controller

HOW TO UPDATE FIRMWARE

1. CONNECT MIDI

- Connect the output of your MIDI interface to **MIDI IN** on the EFX-LE.
- DO NOT** plug in power or MIDI OUT jack.
- Our recommended MIDI interfaces are the **Roland UM-ONE** and the **M-Audio USB UNO 1x1**.
These MIDI interfaces are inexpensive and have been tested to be compatible with the EFX-LE.

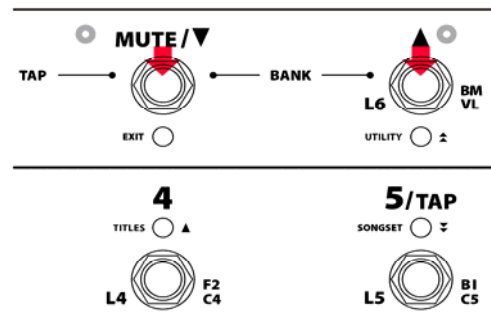


NOTE

- Some MIDI interfaces can not be used with the EFX-LE.
- Make sure to install the latest drivers for your MIDI interface before attempting to update the EFX-LE.

2. CONNECT POWER

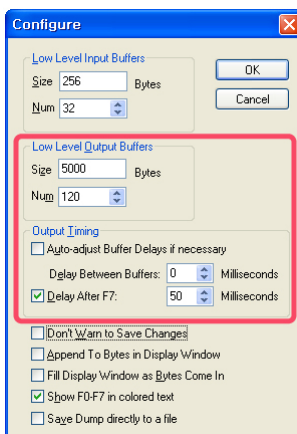
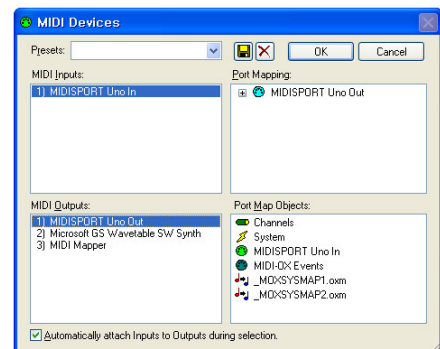
- Plug in power while holding the **BANK▼** and the **BANK▲** switches down.
- The display will show 'Firmware Update!'
- At this moment, the two switches can be released.



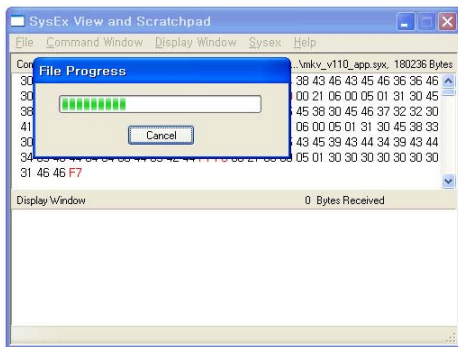
3. UPDATE EFX MKIV

ON A PC

- Download and install **MIDI-OX** <http://www.midiox.com/zip/midioxse.exe>
- Launch MIDI-OX
- Choose Options -> MIDI Devices...
- Select the correct MIDI Input and output from your MIDI interface.



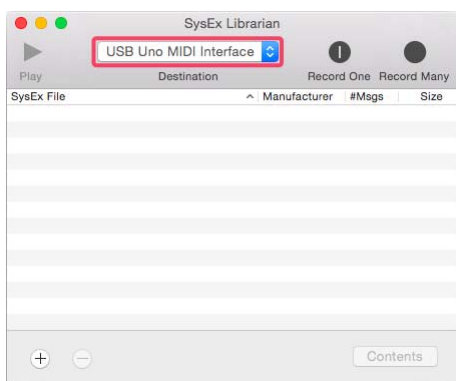
- Choose **View -> Sysex...**
- Choose **Sysex -> Configure...**
- Set numeric values and check boxes as in the image.
- If you want to use different MIDI data transmission software, make sure that the delay time is set to 50ms.



- Download and Unpack the new firmware Zip file. <http://www.musicomlab.com/efx-le.htm>
- Choose **Command Windows** -> **Load File...** to open the new firmware file (EFX-LE_vxxx_app.syx).
- Choose **Command Windows** -> **Send Sysex**.
- All LEDs above the switches blink while the new firmware is loading. This updating process requires about **three minutes**.
- The EFX-LE automatically restarts when the update is complete.

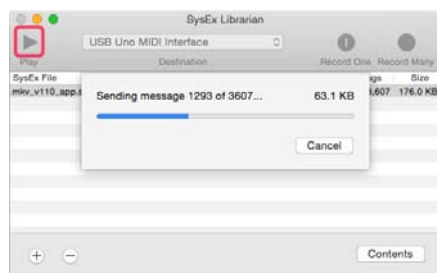
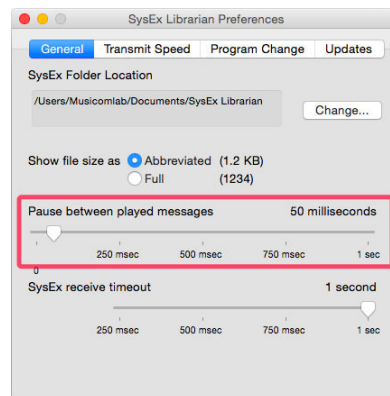
ON A MAC

- Download and install **SysEx Librarian** <http://www.snoize.com/SysExLibrarian/>



- Launch SysEx Librarian.
- Select your MIDI interface in the pull down menu.

- Set the preference for '**Pause between played messages**' to **50 milliseconds**.
- If you want to use different MIDI data transmission software, make sure that the delay time is set to 50ms.



- Download and Unpack the new firmware Zip file. <http://www.musicomlab.com/efx-le.htm>
- Drag the new firmware file(EFX-LE_vxxx_app.syx) into the SysEx Librarian main window.
- press '► Play'
- All LEDs above the switches blink rapidly while the new firmware is loading. This updating process requires about **three minutes**.
- The EFX-LE automatically restarts when the update is complete.