

EFX - LE

Audio Controller

***EFX-LE EDITOR
OWNER'S MANUAL***

Musicom 
Preserving Your Tone, Pure and Dynamic

Download and Unpack the EFX-LE Editor

- Download and unpack the Zip file.

www.musicomlab.com/efx-le.htm

Note

- The EFX-LE Editor is a standalone software. No installation is not required.
- To use the EFX-LE Editor, the EFX-LE firmware must be **V1.40 or higher**.
If the EFX-LE firmware is lower than V1.40, you need to update to the latest firmware.
Refer to the '**Firmware Update**' on the Page 6.

Connect MIDI Interface

- Connect your computer and MIDI interface.
- Connect the MIDI interface's MIDI IN to the EFX-LE's MIDI OUT/THRU and the MIDI interface's MIDI OUT to the EFX-LE's MIDI IN.

Note

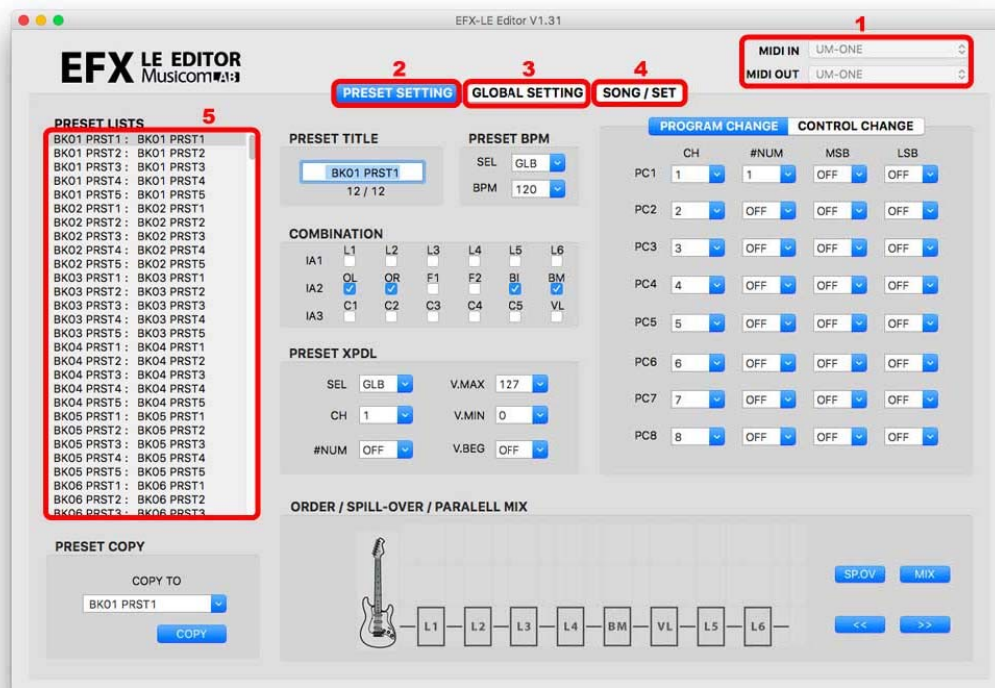
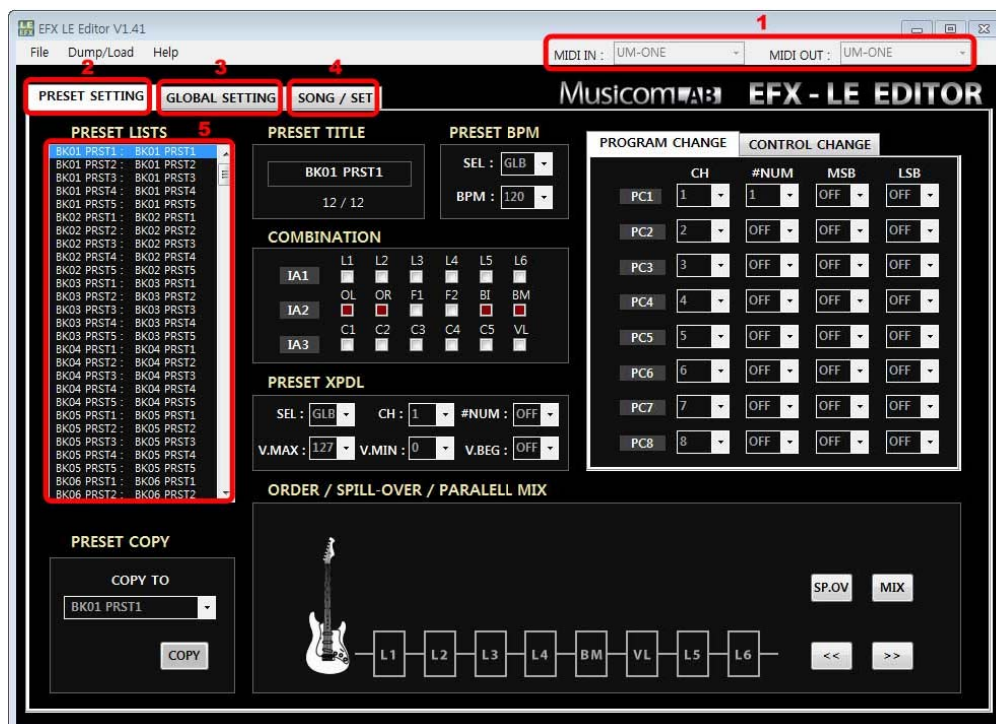
- Make sure to install the latest drivers for your MIDI interface before attempting to start the EFX-LE Editor.
- Our recommended MIDI interfaces are the **Roland UM-ONE** and **M-Audio USB UNO 1x1**.
These MIDI interfaces are inexpensive and have been tested to be compatible with the EFX-LE.

Start the EFX-LE Editor

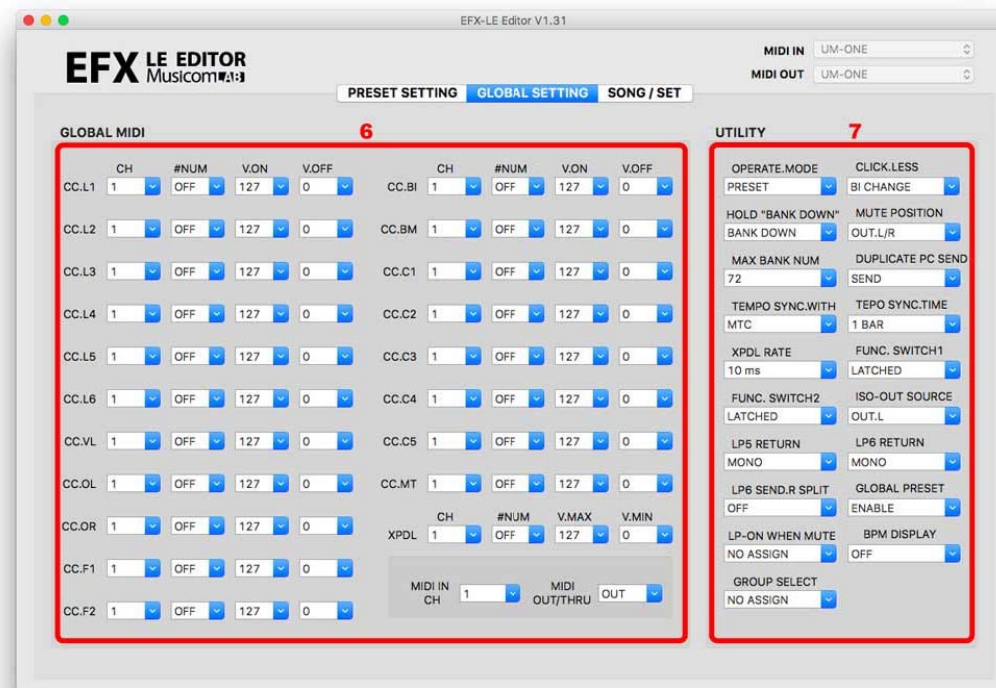
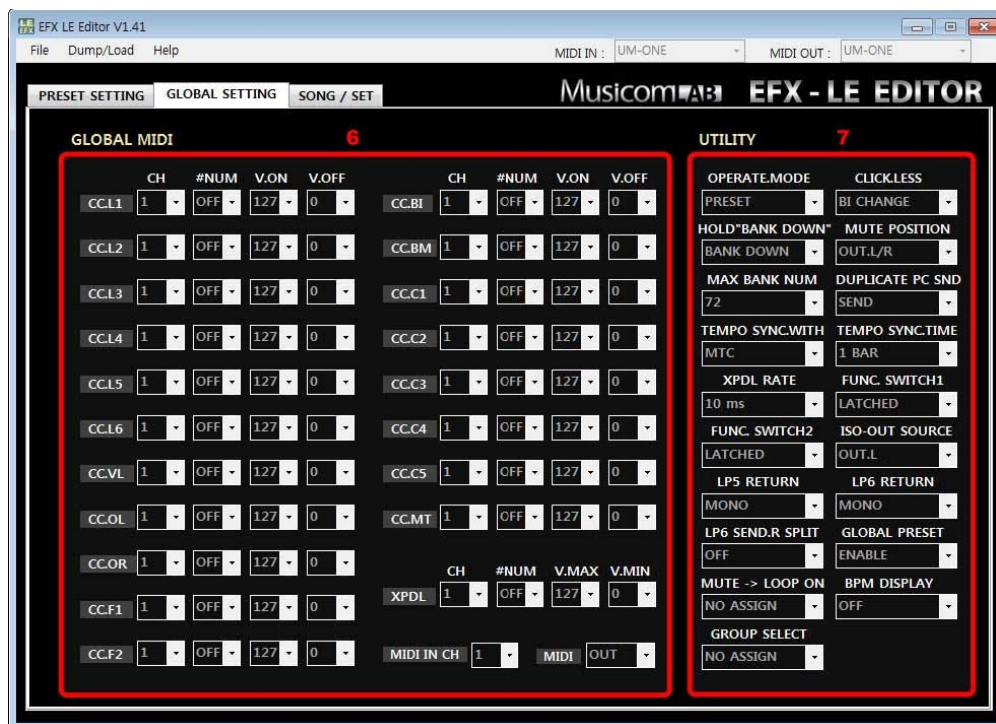
- Double-click **EFX-LE_Editor_V1xx.exe** file to start the editor.
- Plug in power to the EFX-LE.
- The EFX-LE must be on the **MIDI SYSEX DATA DUMP/LOAD** menu in the SETUP mode in order to work with the Editor.
Follow the procedure below.LCD display DUMP
 1. To enter the SETUP Mode, press and hold the **MODE** switch for 2 second.
 2. To enter the UTILITY Menu, press the **BANK▲** (UTILITY) switch.
 3. To move the MIDI SYSEX DATA DUMP/LOAD menu, Press the **3** or **4** switch until '**MIDI SYSEX DATA =DUMP/LOAD**' is shown on the LCD display.

Each button on the front panel

Screen Description

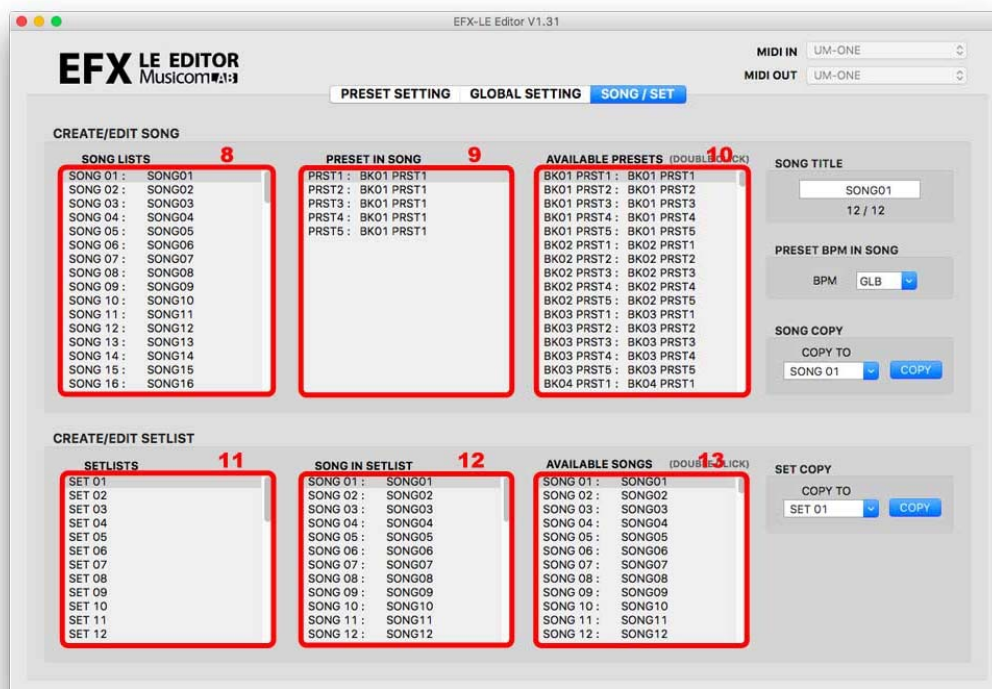
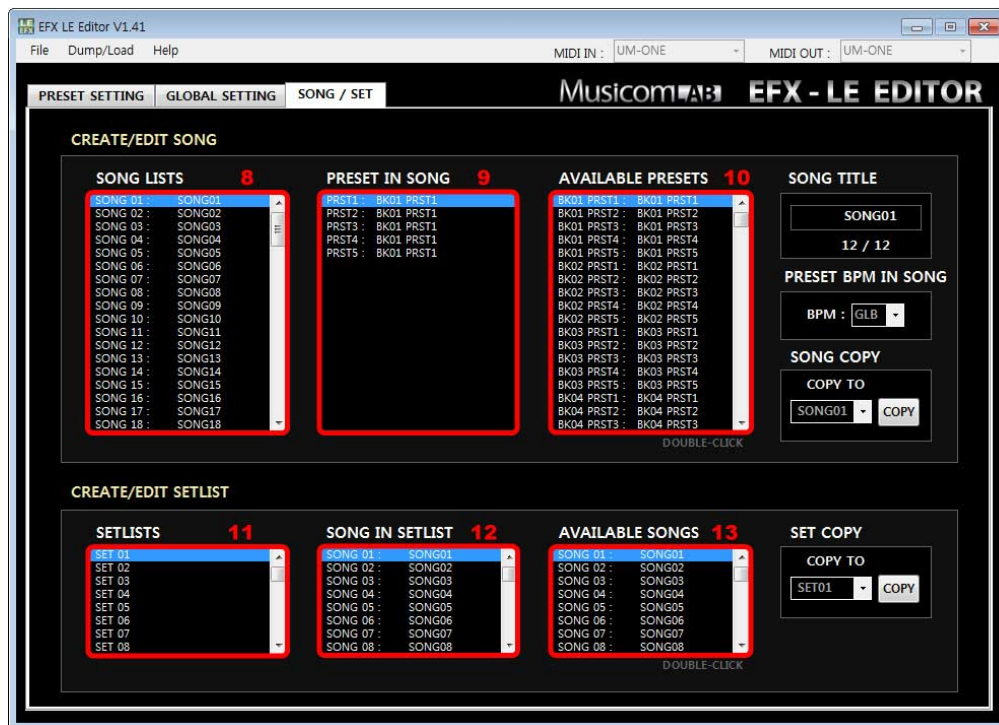


1. MIDI IN/OUT DEVICE SELECTOR – Select the your MIDI interface's MIDI IN & OUT
2. PRESET SETTING MENU
3. GLOBAL SETTING MENU
4. SONG/SET MENU
5. PRESET LISTS – Select a preset that you want to edit.



6. GLOBAL MIDI MENU

7. UTILITY MENU



- 8. **SONG LISTS** – Select a song that you want to edit.
- 9. **PRESET IN SONG** – Select a preset in the song that you want to edit.
- 10. **AVAILABLE PRESETS** – Select a original preset to be used in the song by double-click.
- 11. **SETLISTS** – Select a setlist that you want to edit.
- 12. **SONG IN SET** – Select a song in the setlist that you want to edit.
- 13. **AVAILABLE SONGS** – Select a original song to be used in the setlist by double-click.

Load Data from EFX-LE

- Choose **Dump/Load** -> **Load (From EFX-LE)**
- The EFX-LE must be on the **MIDI SYSEX DATA DUMP/LOAD** menu in the SETUP mode

Dump Data to EFX-LE

- Choose **Dump/Load** -> **Dump (To EFX-LE)**
- The EFX-LE must be on the **MIDI SYSEX DATA DUMP/LOAD** menu in the SETUP mode

Firmware Update

- Download and Unpack the new firmware Zip file.
<http://www.musicomlab.com/efx-le.htm>
- Plug in power while holding the **BANK▼** and **BANK▲** switches down. The LCD display will show 'Firmware Update!'
- Choose **File** -> **Firmware Update** to open the new firmware file (EFX_LE_vxxx_app.syx).
- Click 'UPDATE' button.
- All LEDs above the switches blink while the new firmware is loading.
This updating process requires about **four minutes**.
- The EFX-LE automatically restarts when the update is complete.